

SNAP

Nutrition Assistance for Idaho Families



1 in 5

IDAHO CHILDREN participate in SNAP

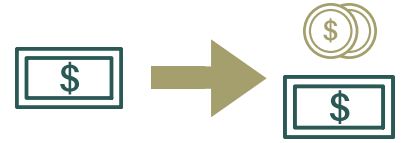


12% of IDAHO HOUSEHOLDS



rely on SNAP to help feed themselves and their families

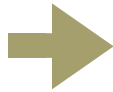
every \$1 invested in SNAP



results in \$1.70 of economic growth

CHILDREN WITH SNAP FAIR BETTER IN ADULTHOOD

\$1.28 per meal results in



-16%

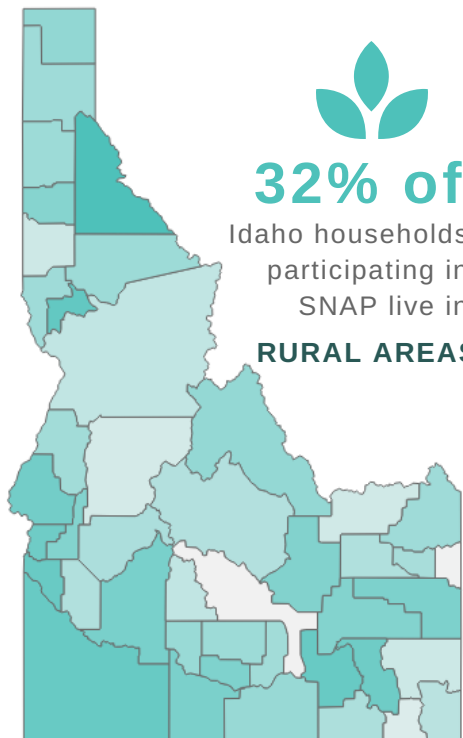
decreased likelihood of OBESITY

-5%

decreased likelihood of HEART DISEASE

+18%

increased likelihood of HIGH SCHOOL COMPLETION



SNAP Participation Rate, February 2018

2.9% 16.0%

SNAP SUPPORTS WORK

by providing Idahoans with employment and training programs through

PUBLIC - PRIVATE PARTNERSHIPS



71,500 IDAHO FAMILIES

used the program in December 2017. The most recent figures show that in 2016, more than two-thirds of SNAP participants in Idaho were either children (48.9 percent), elderly adults (9.3 percent), or non-elderly adults with disabilities (10.4 percent).



Idaho Asset Building Network

In partnership with Idaho Voices for Children

For resources and more information:

Sasha Pierson, MSc | Policy Specialist
spierson@jannus.org | (208) 947-4252

Sources:

Census Bureau. (2017). Food stamps/Supplemental Nutrition Assistance Program (SNAP), 2012-2016 American Community Survey 5-year estimates. / Food Research and Action Center. (2018). Average monthly households and individuals participating in SNAP, FY 2016. / Mitchell, T. & Sherman, A. (2017). *Economic security programs help low-income children succeed over long term, many studies find.* / Department of Agriculture. (2017). Characteristics of Supplemental Nutrition Assistance Program households: Fiscal year 2016. / Idaho Department of Health and Welfare. (2017). Facts, Figures, and Trends, FY2016-17. / Rosenbaum, D. (2013). *SNAP is effective and efficient.*